



## POWER 10WATT



POWER TALLED	: 10WATT
CHIP LED	: BRIDGELUX
LED LUMINOUS EFFECIENCY	: $\pm 1100$
COLOR TEMPERATURE WHITE	: 7500K
CCT WARM WHITE	: 3000K
INPUT VOLTAGE	: 100 - 305VAC
IP RATING	: IP65
SHINE ANGLE	: 120°
PF : $\geq 0.95$ $\eta$ : $\geq 88\%$	

## POWER 20WATT



POWER TALLED	: 20WATT
CHIP LED	: BRIDGELUX
LED LUMINOUS EFFECIENCY	: $\pm 2200$
COLOR TEMPERATURE WHITE	: 7500K
CCT WARM WHITE	: 3000K
INPUT VOLTAGE	: 100 - 305VAC
IP RATING	: IP65
SHINE ANGLE	: 120°
PF : $\geq 0.95$ $\eta$ : $\geq 88\%$	

## POWER 30WATT



POWER TALLED	: 30WATT
CHIP LED	: BRIDGELUX
LED LUMINOUS EFFECIENCY	: $\pm 3300$
COLOR TEMPERATURE WHITE	: 7500K
CCT WARM WHITE	: 3000K
INPUT VOLTAGE	: 100 - 305VAC
IP RATING	: IP65
SHINE ANGLE	: 120°
PF : $\geq 0.95$ $\eta$ : $\geq 88\%$	

Made in Korea



## POWER 40WATT



POWER TALLED : 40WATT  
CHIP LED : BRIDGELUX  
LED LUMINOUS EFFECIENCY :  $\pm 4400$   
COLOR TEMPERATURE WHITE : 7500K  
CCT WARM WHITE : 3000K  
INPUT VOLTAGE : 100 - 305VAC  
IP RATING : IP65  
SHINE ANGLE : 120°  
PF :  $\geq 0.95$   $\eta$  :  $\geq 88\%$

## POWER 50WATT



POWER TALLED : 50WATT  
CHIP LED : BRIDGELUX  
LED LUMINOUS EFFECIENCY :  $\pm 5500$   
COLOR TEMPERATURE WHITE : 7500K  
CCT WARM WHITE : 3000K  
INPUT VOLTAGE : 100 - 305VAC  
IP RATING : IP65  
SHINE ANGLE : 120°  
PF :  $\geq 0.95$   $\eta$  :  $\geq 88\%$

## POWER 60WATT



POWER TALLED : 60WATT  
CHIP LED : BRIDGELUX  
LED LUMINOUS EFFECIENCY :  $\pm 6600$   
COLOR TEMPERATURE WHITE : 7500K  
CCT WARM WHITE : 3000K  
INPUT VOLTAGE : 100 - 305VAC  
IP RATING : IP65  
SHINE ANGLE : 120°  
PF :  $\geq 0.95$   $\eta$  :  $\geq 88\%$

Made in Korea



## POWER 70WATT



POWER TALLED	: 70WATT
CHIP LED	: BRIDGELUX
LED LUMINOUS EFFECIENCY	: $\pm 7700$
COLOR TEMPERATURE WHITE	: 7500K
CCT WARM WHITE	: 3000K
INPUT VOLTAGE	: 100 - 305VAC
IP RATING	: IP65
SHINE ANGLE	: 120°
PF : $\geq 0.95$ $\eta$ : $\geq 88\%$	

## POWER 80WATT



POWER TALLED	: 80WATT
CHIP LED	: BRIDGELUX
LED LUMINOUS EFFECIENCY	: $\pm 8800$
COLOR TEMPERATURE WHITE	: 7500K
CCT WARM WHITE	: 3000K
INPUT VOLTAGE	: 100 - 305VAC
IP RATING	: IP65
SHINE ANGLE	: 120°
PF : $\geq 0.95$ $\eta$ : $\geq 88\%$	

## POWER 100WATT



POWER TALLED	: 100WATT
CHIP LED	: BRIDGELUX
LED LUMINOUS EFFECIENCY	: $\pm 11000$
COLOR TEMPERATURE WHITE	: 7500K
CCT WARM WHITE	: 3000K
INPUT VOLTAGE	: 100 - 305VAC
IP RATING	: IP65
SHINE ANGLE	: 120°
PF : $\geq 0.95$ $\eta$ : $\geq 88\%$	

Made in Korea



# TALLED

SPECIAL EDITIONS

# FLOOD LIGHT

**POWER  
140WATT**



POWER TALLED	: 140WATT
CHIP LED	: BRIDGELUX
LED LUMINOUS EFFECIENCY	: ±15400
COLOR TEMPERATURE WHITE	: 7500K
CCT WARM WHITE	: 3000K
INPUT VOLTAGE	: 100 -305VAC
IP RATING	: IP65
SHINE ANGLE	: 120°
PF : ≥ 0.95	η : ≥ 88%

**POWER  
200WATT**



POWER TALLED	: 200WATT
CHIP LED	: BRIDGELUX
LED LUMINOUS EFFECIENCY	: ±22000
COLOR TEMPERATURE WHITE	: 7500K
CCT WARM WHITE	: 3000K
INPUT VOLTAGE	: 100 -305VAC
IP RATING	: IP65
SHINE ANGLE	: 120°
PF : ≥ 0.95	η : ≥ 88%

Made in Korea



# TALLED

SPECIAL EDITIONS

# FLOOD LIGHT

**POWER  
280WATT**



**POWER TALLED : 280WATT**  
**CHIP LED : BRIDGELUX**  
**LED LUMINOUS EFFECIENCY : ±30800**  
**COLOR TEMPERATURE WHITE : 7500K**  
**CCT WARM WHITE : 3000K**  
**INPUT VOLTAGE : 100 -305VAC**  
**IP RATING : IP65**  
**SHINE ANGLE : 120°**  
**PF : ≥ 0.95 η : ≥ 88%**

**POWER  
320WATT**



**POWER TALLED : 320WATT**  
**CHIP LED : BRIDGELUX**  
**LED LUMINOUS EFFECIENCY : ±35200**  
**COLOR TEMPERATURE WHITE : 7500K**  
**CCT WARM WHITE : 3000K**  
**INPUT VOLTAGE : 100 -305VAC**  
**IP RATING : IP65**  
**SHINE ANGLE : 120°**  
**PF : ≥ 0.95 η : ≥ 88%**

**Made in Korea**



# TALLED SPOT LED

# SPOT LED

**POWER  
250WATT**



POWER TALLED : 250WATT  
CHIP LED : CREE  
LED LUMINOUS EFFECIENCY : ±27500  
COLOR TEMPERATURE WHITE : 6000K  
INPUT VOLTAGE : 100 - 305VAC  
IP RATING : IP65  
SHINE ANGLE : 6°  
PF : ≥ 0.95 η : ≥ 88%

# TALLED SPOT STADIUM LED

# STADIUM LED

**POWER  
350WATT**

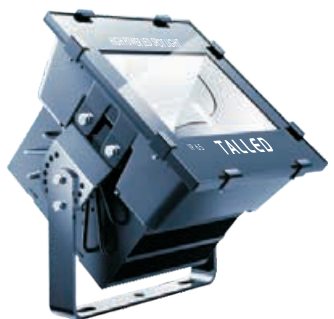


POWER TALLED : 350WATT  
CHIP LED : CREE  
LED LUMINOUS EFFECIENCY : ±38500  
COLOR TEMPERATURE WHITE : 6000K  
INPUT VOLTAGE : 100 - 305VAC  
IP RATING : IP65  
SHINE ANGLE : 60° X 90°  
PF : ≥ 0.95 η : ≥ 88%

# TALLED SPECIAL EDITIONS

# FLOOD LIGHT

**POWER  
500WATT**



POWER TALLED : 500WATT  
CHIP LED : CREE  
LED LUMINOUS EFFECIENCY : ±55000  
COLOR TEMPERATURE WHITE : 6000K  
INPUT VOLTAGE : 100 - 305VAC  
IP RATING : IP65  
SHINE ANGLE : 120°  
PF : ≥ 0.95 η : ≥ 88%

Made in Korea

